

Standard ZIF

Pitch : 0.5mm
Height : 1.0mm



FH34 Series

Pitch : 0.25mm
Height : 0.5mm



FH64MA Series

Pitch : 0.2/0.25mm
Height : 0.9mm



FH58 Series

OneAction Lock

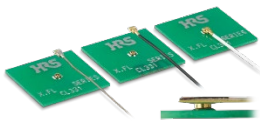
Pitch : 0.3/0.25mm



FH72/FH82 Series

RF Cable

Height : 0.94/1.2mm
Frequency : Up to 12GHz



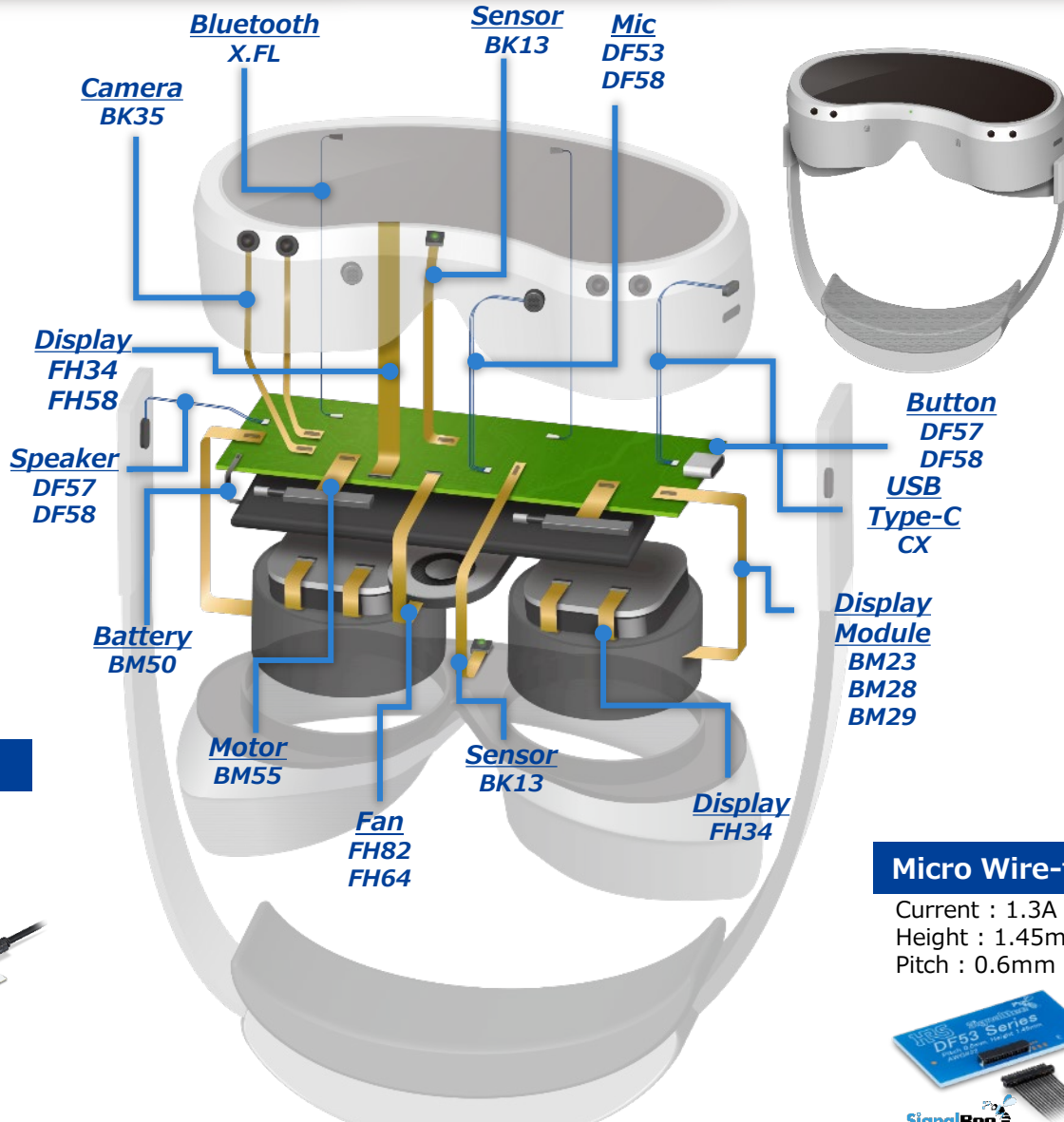
X.FL Series

USB Type-C

Top-Mount,
Mid-Mount, Vertical

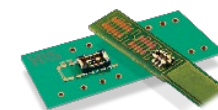


CX Series



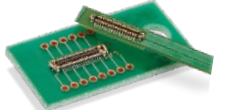
FPC-to-Board

Pitch : 0.35mm
Height : 0.6mm
Depth : 1.5mm



BM29 Series

Pitch : 0.35mm
Height : 0.6mm
Depth : 1.7mm



BM28 Series

Pitch : 0.35mm
Height : 0.6/0.8mm
Depth : 1.98mm



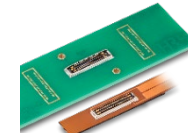
BM23FR/BM23PF Series

High Current 15A
Height : 0.6mm



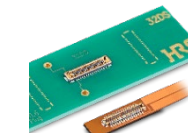
BM50 Series

Full-Shielded
Pitch : 0.35mm



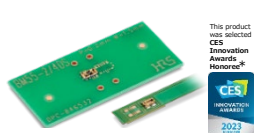
BK35 Series

Height Variation
Pitch : 0.35mm



BK13 Series

Pitch : 0.3mm
Height : 0.5mm



BM55 Series

Micro Wire-to-Board

Current : 1.3A Max.
Height : 1.45mm
Pitch : 0.6mm



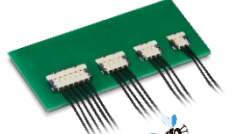
DF53 Series

Current : 3.0A Max.
Height : 1.4/1.6mm
Pitch : 1.2mm



DF57 Series

Current : 3.0A Max.
Height : 1.0mm
Pitch : 1.2mm



DF58 Series