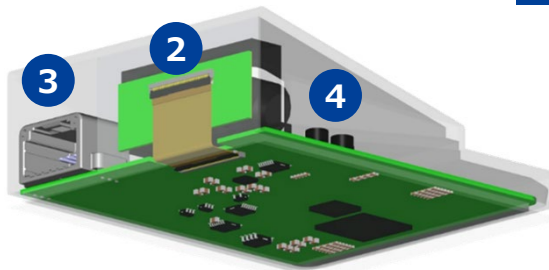
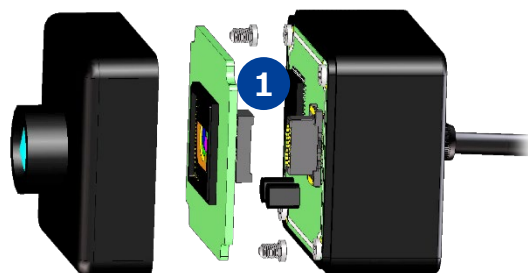
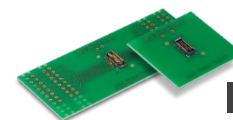


## View Camera

## Sensing Camera



## 1. Internal Connection (Floating Board-to-Board, Board-to-Board(FPC))

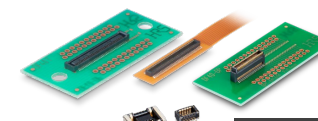


Floating Design

125℃

**BM54**

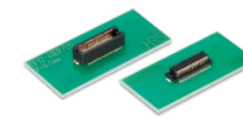
Floating, Compact  
Pitch : 0.4mm  
Stacking Height : 3.0-4.5mm



125℃

**DF40T**

Low Profile,  
Narrow Pitch : 0.4mm  
Stacking Height : 1.5-7.0mm  
1.5 (Shielded Type : DF40GT)



105℃

**DF12N**

Space-saving Design  
Pitch : 0.5mm  
Stacking Height : 3-5mm

## 2. Internal Connection (FPC/FFC)

Best Selling



125℃

**FH75/FH75M**

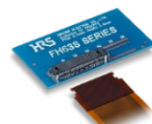
Pitch : 0.4/0.5mm  
Front Flip  
Two-Point Contact



125℃

**FH52K**

Pitch : 0.5/1.0mm  
Height : 2.0mm



One Action

125℃

**FH63S**

Horizontal Connection  
Pitch : 0.5mm  
Height : 2.8mm



One Action

125℃

**FH67**

Vertical Connection  
Pitch : 0.5mm  
Height : 5.2mm



125℃

**FH69**

Back Flip  
Independent  
Two-Point Contact  
Pitch : 0.5mm  
Height : 2.3mm

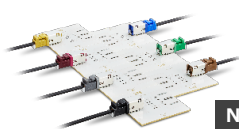


125℃

**FH65**

Low Profile,  
Space-saving Design  
Pitch : 0.5mm  
Height : 1.2mm

## 3. Interface Connection (High Speed Wire-to-Board, Wire-to-Board)



Noise Resistant

105℃

**GT43**

Compact, One Step Crimping  
Frequency : 3GHz  
Coaxial Cable : 1.5D



Robust

125℃

**ZE05**

Pitch : 2mm  
Rated Current :  
2A (All pins power supply)  
No. of Pos. : 2-24  
AWG : 20-22



105℃

**GT25**

Pitch : 2.2mm  
Rated Current :  
3A (All pins power supply)  
No. of Pos. : 8-40  
AWG : 20-26

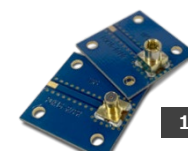
## 4. Internal Connection (Coaxial)



105℃

**POK15**

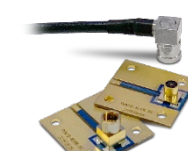
Wire-to-Board  
Mated Height : 14mm  
V.S.W.R. :  
1.5 Max. (0 to 3GHz)



105℃

**POK16**

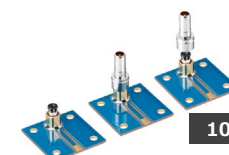
Board-to-Board  
Mated Height :  
7.4mm  
V.S.W.R. :  
1.5 Max. (0 to 3GHz)



105℃

**POK19**

Board-to-Board,  
Wire-to-Board  
Mated Height : 9, 12mm  
V.S.W.R. :  
1.5 Max. (0 to 6GHz)



105℃

**POK22**

Floating  
Mated Height : 16.45mm  
V.S.W.R. :  
1.49 Max. (0 to 6GHz)