

Standard ZIF

Pitch : 0.5mm
Height : 1.0mm

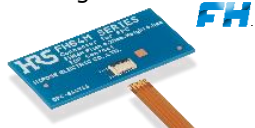
FH



FH34 Series

Pitch : 0.25mm
Height : 0.5mm

FH

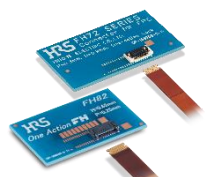


FH64 Series

OneAction Lock

Pitch : 0.3/0.25mm

OneAction FH



FH72/FH82 Series

Pitch : 0.2/0.25mm
Height : 0.9mm

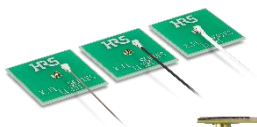
FH



FH58 Series

RF Cable

Height : 0.94/1.2mm
Frequency : Up to 12GHz



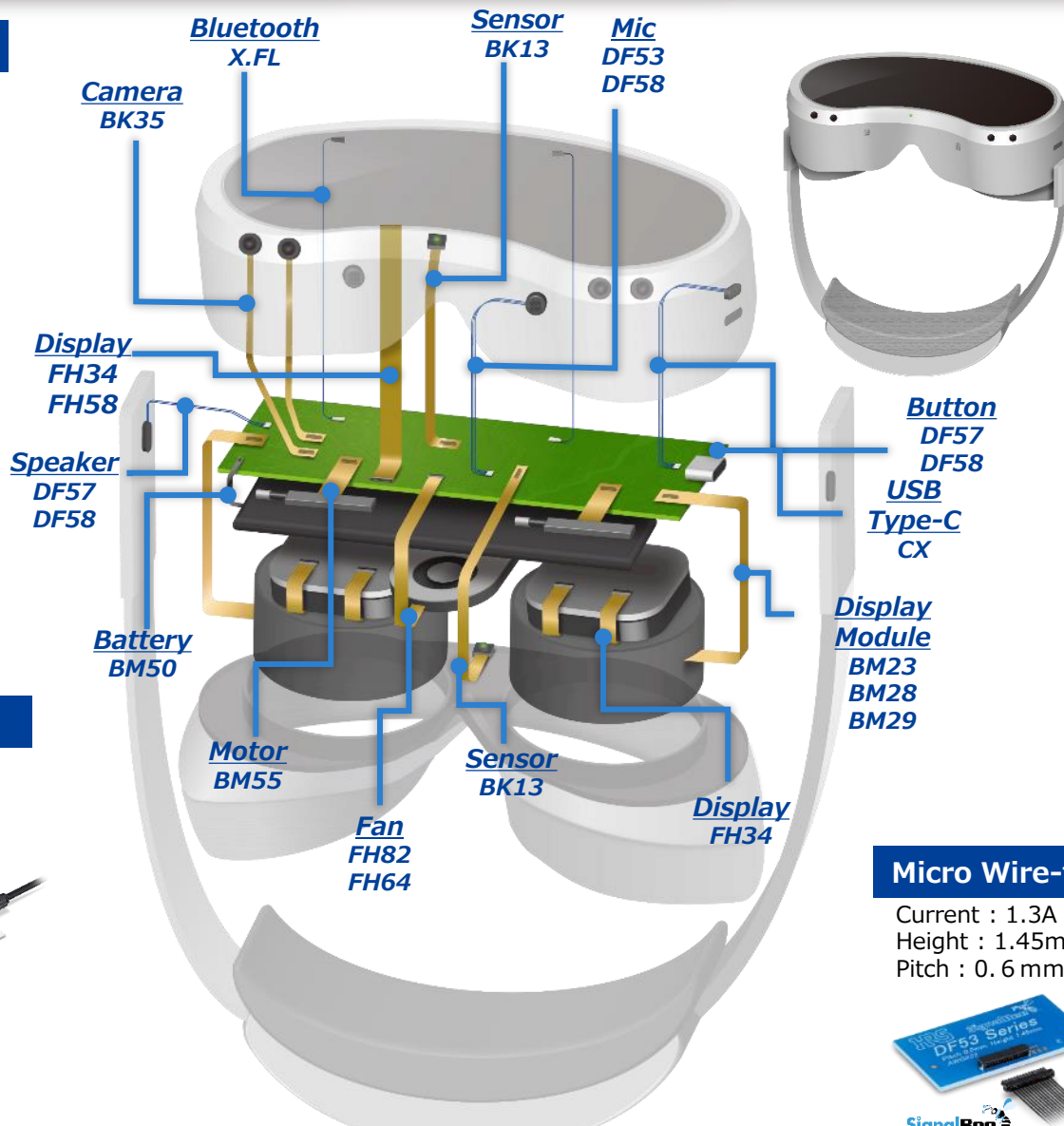
X.FL Series

USB Type-C

Top-Mount,
Mid-Mount, Vertical

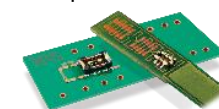


CX Series



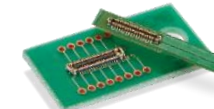
FPC-to-Board

Pitch : 0.35mm
Height : 0.6mm
Depth : 1.5mm



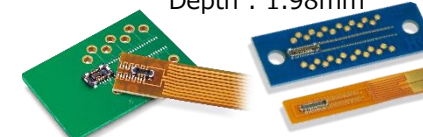
BM29 Series

Pitch : 0.35mm
Height : 0.6mm
Depth : 1.7mm



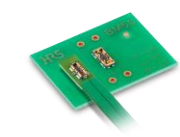
BM28 Series

Pitch : 0.35mm
Height : 0.6/0.8mm
Depth : 1.98mm



BM23FR/BM23PF Series

High Current 15A
Height : 0.6mm



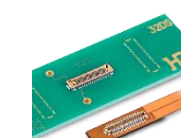
BM50 Series

Full-Shielded
Pitch : 0.35mm



BK35 Series

Height Variation
Pitch : 0.35mm



BK13 Series

Pitch : 0.3mm
Height : 0.5mm



BM55 Series



Micro Wire-to-Board

Current : 1.3A Max.
Height : 1.45mm
Pitch : 0.6mm



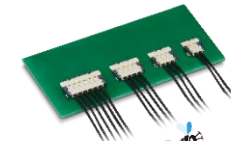
SignalBee DF53 Series

Current : 3.0A Max.
Height : 1.4/1.6mm
Pitch : 1.2mm



SnapBee DF57 Series

Current : 3.0A Max.
Height : 1.0mm
Pitch : 1.2mm



SnapBee DF58 Series

*The CES Innovation Awards are based upon descriptive materials submitted to the judges. CTA did not verify the accuracy of any submission or of any claims made and did not test the item to which the award was given.

EN_A_VR_Glasses_16-9, Aug. 15, 2024 © 2024 HIROSE ELECTRIC CO., LTD. All rights reserved. Subject to change without notice. Please contact Hirose representative for updated information.