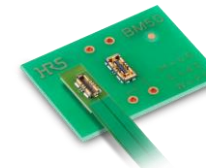
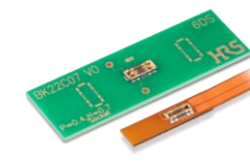
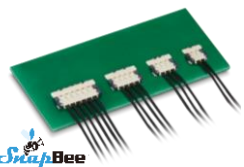
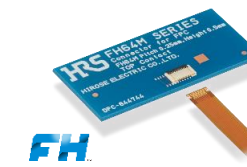
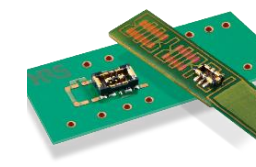


**Antenna****Micro Coaxial**

Frequency : 0 to 12GHz

[X.FL Series](#)**Interface****UBS Type-C**

IPX8 Waterproof

[CX Series](#)**Battery****High Current**Power : 15A  
Depth : 2.0mm[BM50 Series](#)Power : 15A  
Depth : 2.3mm[BK22 Series](#)**RF Switch****Ultra Compact**Frequency : 0 to 11GHz  
Height : 0.85mm[MS-180 Series](#)**Main to Sensor (Wire)****Wire to Board Connection**Power : 3.0A Max.  
Height : 1.0mm  
Pitch : 1.2mmPower : 1.3A Max.  
Height : 1.45mm  
Pitch : 0.6mm[DF58 Series](#)[DF53 Series](#)**Main to Sensor (FPC)****Low Profile, ZIF**Height : 0.5mm  
Pitch : 0.25mm[FH64 Series](#)**One Action**Height : 0.65mm  
Pitch : 0.25mm[OneAction FH](#)[FH82 Series](#)**FPC-to-Board, Power & Signal Hybrid**Height : 0.6mm  
Pitch : 0.35mm[BM29 Series](#)Height : 0.5mm  
Pitch : 0.3mm[BM55 Series](#)