

Hirose Connectors – GNSS Antenna/Receiver



[Click here to request a sample](#)

1. Main board to Antenna module

Clear Tactile Click



U.FL-K Series
8GHz, Gold plating

High Frequency



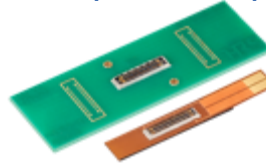
SMA(R) Series
26.5GHz, FL conversion adaptor

RF switch

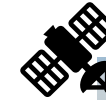


MS-156C Series

Shielded
2.5A/pin+0.3A/pin



BK35 Series
P=0.35mm, H=0.6mm



External Antenna
Embedded PCB antenna

Coax cable
USB
Bluetooth
WiFi



Power line (12pos)



2. I/O (Power, Signal Transmission)

IP67*



DF62WZ Series
P=2.2mm, AWG20-26

Small, Light weight



HR30 Series
Max.5A/pin, AWG26-30

Vibration Resistance



HR34B Series
Max.5A/pin, AWG20-25

Robust



CX Series
20Gbps, Max.6A/pin

3. Internal connection

Vertical Mating



DF57 Series
P=1.2mm, AWG26-34

Vibration Resistance



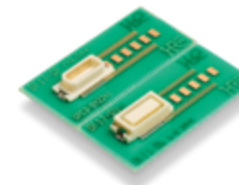
KW30 Series
P=1.0mm, AWG28-32

Wide Variation



DF40 Series
P=0.4mm, H=1.5-4.0mm

Wide Variation



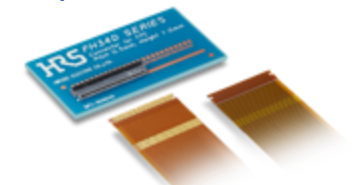
DF17 Series
P=0.5mm, H=4.0-8.0mm

High-Speed



FH55/FH55M Series
P=0.5/0.4mm, H=1.5mm

Top & Bottom Contact



FH34 Series
P=0.5mm, Back flip

GNSS Antenna/Receiver

