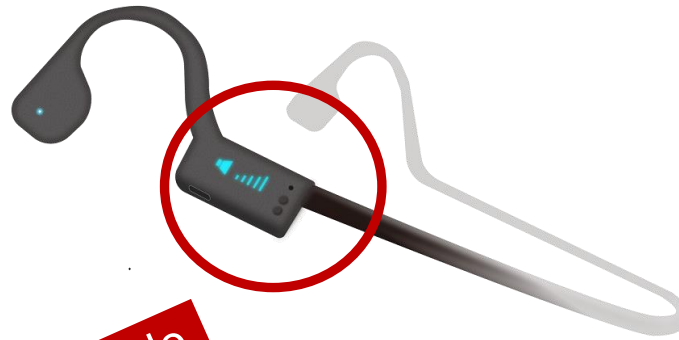
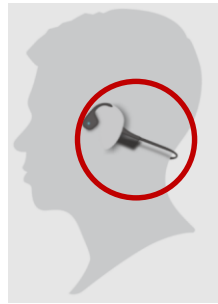
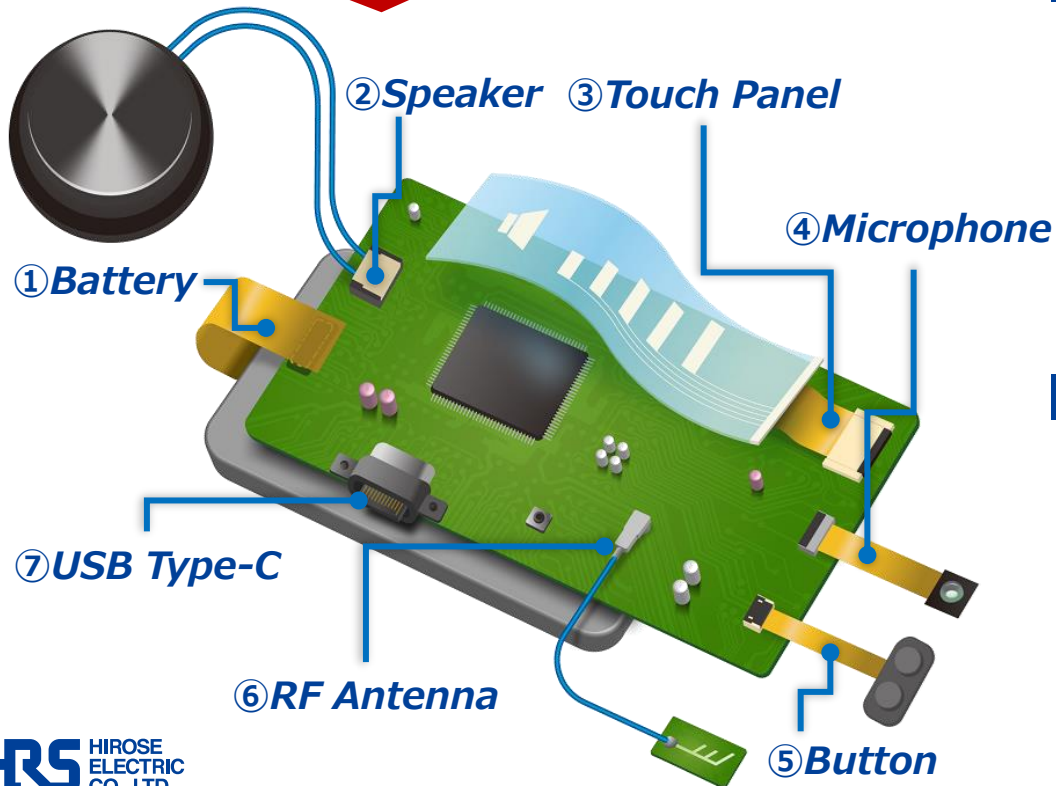


Bone-Conduction Earphone



Inside



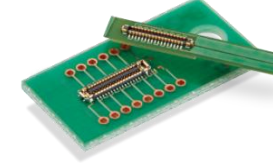
1. Battery

High Current
Battery 10A



BM25 Series

Narrow Hybrid
Depth : 1.7mm



BM28 Series

2. Speaker

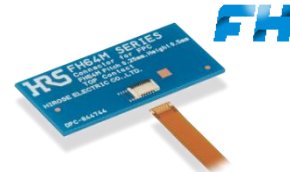
Wire-to-Board, Snap Lock
3A Max.



DF57 Series

3. Touch Panel

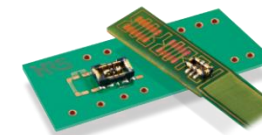
Low Profile ZIF
Height : 0.5mm



FH64 Series

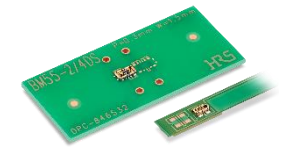
4. Microphone

Narrow Battery
Depth : 1.5mm



BM29 Series

Narrow Hybrid
Depth : 1.5mm



BM55 Series



This product was selected as a CES Innovation Awards Honoree*

*The CES Innovation Awards are based upon descriptive materials submitted to the judges. CTA did not verify the accuracy of any submission or of any claims made and did not test the item to which the award was given.

5. Button

One Action,
Simple and Easy
Pitch : 0.25 mm

OneAction **FH**



FH82 Series

6. RF Antenna

Micro Coaxial
Switch
Height : 0.85mm



MS-180 Series

7. USB Type-C

USB Type-C
6A Max.



CX Series