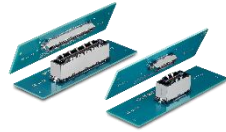


1 Main to Sub Board Connection

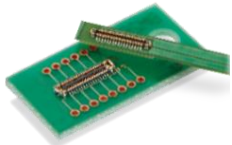


High-Speed
Board-to-Board,
Floating

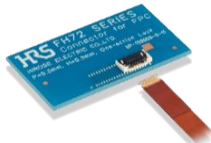


High-Speed Shield,
Board-to-Board,
Floating

2 LED Connection

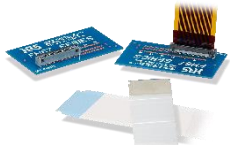


Ultra Small
Power/Signal,
Board-to-Board

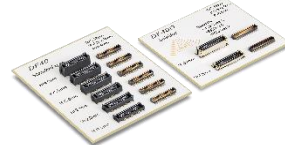


Standard FPC,
Low Pitch

3 Switch Connection



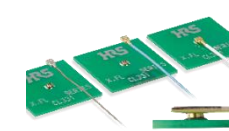
One Action,
Vertical/Shield
FFC



Wide Stacking
Height Variations



4 Antenna Connection



RF Connector



Multi-RF

5 Battery Connection



Compact & Robust
Board-to-Wire



Low Profile
Board-to-Wire

6 Ethernet Connection



High-Speed
Standard Ethernet



Next Generation
Ethernet Connector

7 I/O



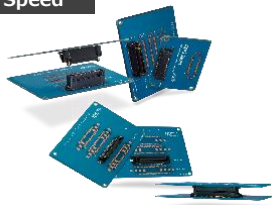
Type-C Connector

1. Main to Sub Board Connection

High Speed (Floating Board-to-Board)

FunctionMAX™

High Speed


FX23/FX23L

 Pitch : 0.5mm
 Rated Current : 3A/Power Pin

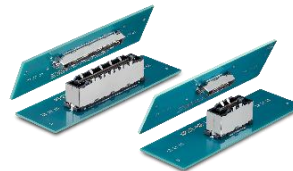
FunctionMAX™

High Speed

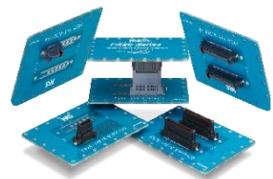

FX18

 Variations : Straight/Right Angle
 Pitch : 0.8mm
 Rated Current : 3A/Power Pin

125°C


KP27F

 High Heat Resistance
 Floating Range :
 $\pm 0.8\text{mm}$ in X&Y Directions
 Pitch : 0.5mm
 Height : 21mm
 Rated Current : 3A/Power Pin

FunctionMAX™

FX20

 Pitch : 0.5mm
 Floating Range : $\pm 0.6\text{-}0.8\text{mm}$
 in the X direction and $\pm 0.6\text{mm}$
 in the Y direction

FunctionMAX™

High Speed

 Smooth
 Insertion

 High Mating
 Reliability

ER8

 16+Gbps
 Pitch : 0.8mm
 Height : 7-12mm
 Variations : Right Angle/Parallel /Coplanar


2. LED Connection

FPC-to-Board (2 Piece)

Low Profile

Space-Saving

Wide Stacking
Height VariationsEMI Prevention
with Shield

BM28

Hybrid Connector up to 5A
Pitch : 0.35mm
Height : 0.6mm
Depth : 1.7mm
Rated Current : 5A for power
0.3A Max for signal



DF40

Pitch : 0.4mm
Height : 1.5-7.0mm
Depth : 3.38mm
Rated Current : 0.3A
USB4 Gen.2 (20Gbps)



DF40GB

Pitch : 0.4mm
Height : 1.5/3.0/3.5mm
Depth : 3.68mm
Rated Current : 0.3A

FPC (1 Piece)



FH34

Pitch : 0.5mm
Height : 1.0mm
Depth : 3.8mm
Rated Current : 0.5A

FH

Top&Bottom
Contact

Back Flip FPC/FFC



FH62

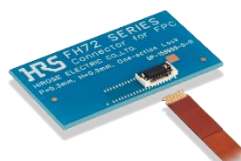
Pitch : 0.25mm
Height : 1.1mm
Depth : 4.0mm
Rated Current : 0.3A

OneAction FH™

Superior Operability

Top Contact

One Action Lock



FH72

Pitch : 0.3mm
Height : 0.9mm
Depth : 3.5mm
Rated Current : 0.3A

OneAction FH™

Superior Operability

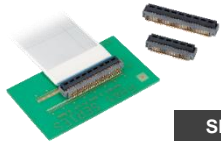
Top Contact

One Action Lock



3. Switch Connection

FPC (1 Piece)

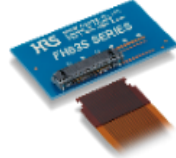


Shielded FFC

High Speed

FH41

Pitch : 0.5mm
Height : 2.5mm
Depth : 6.2mm
Rated Current : 0.5A

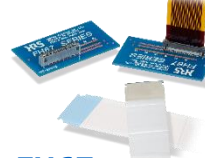


OneAction **FH**[™]

One Action Lock

FH63S

Pitch : 0.5mm
Height : 2.8mm
Depth : 5.15mm
Rated Current : 0.5A



OneAction **FH**[™]

One Action Lock

FH67

Pitch : 0.5mm
Height : 5.2mm
Depth : 3.57mm
Rated Current : 0.5A

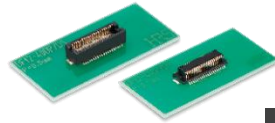
FPC-to-Board (2 Piece)



Wide Stacking
Height Variations

DF17

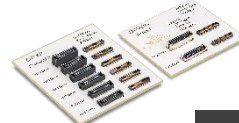
Pitch : 0.5mm
Height : 4.0-8.0mm
Depth : 5.7mm
No. of Pos. : 20-80
Rated Current : 0.3A



Wide Stacking
Height Variations

DF12N

Pitch : 0.5mm
Height : 3.0-5.0mm
Depth : 4.6mm
Rated Current : 0.3A



Wide Stacking
Height Variations

DF40

Pitch : 0.4mm
Height : 1.5-7.0mm
Depth : 3.38mm
Rated Current : 0.3A
USB4 Gen.2 (20Gbps)



4. Antenna Connection (5G/AIP/Wi-Fi)

Miniature RF Connector

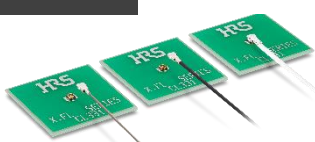
Superior High
Frequency



X.FL

Height : 1.3mm Max.
Frequency : 0 to 12GHz

WiGig Standard



X.FL (Low Loss Type)

Intel WiGig Recommended
Height : 1.3mm Max.
Frequency : 0 to 12GHz

HRS 5G



C.FL

Height : 0.92mm
Frequency : 0 to 30GHz

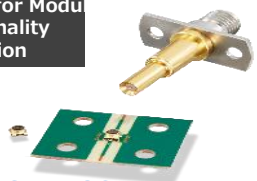
Widely Used
RF Connector



U.FL(A)

Height : 2.2mm Max.
Frequency : 6 to 18GHz

Switch for Modu
Functionality
Inspection

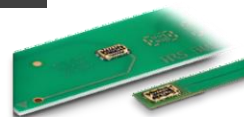


MS-156C

Height : 1.35mm
Frequency : 0 to 11GHz

HRS 5G

Multi-RF

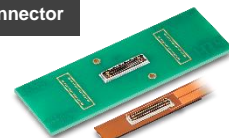


BM56

Pitch : 0.35mm
Height : 0.6mm
Frequency : 0 to 20GHz

Power/Signal

Hybrid FPC-to-
Board Connector



BK35

Pitch : 0.35mm
Height : 0.6mm
Frequency : 0 to 40GHz

FPC-to-Board (2 Piece)



5. Battery Connection

Wire-to-Board



Compact

High Current Capacity



DF52

Pitch : 0.8mm
Height : 1.75mm
Depth : 4.10mm
Rated Current : 2.5A Max.



3Way System Connector



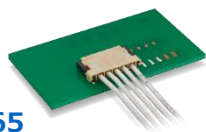
DF59

Pitch : 2.0mm
Height : 2.48mm
Depth : 8.15mm
Rated Current : 3A Max.



Compact

High Current Capacity



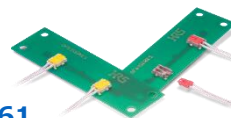
DF65

Pitch : 1.7mm
Height : 1.8mm
Depth : 6.3mm
Rated Current : 4A Max.



Low Profile

Snap Lock Design



DF61

Pitch : 2.2mm
Height : 2.38mm
Depth : 7.35mm
Rated Current : 5A Max.



Compact

Snap Lock Design



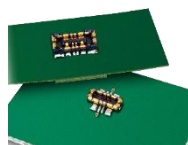
DF61Y

Pitch : 2.2mm
Height : 2.0mm
Depth : 7.35mm
Rated Current : 4A Max.

FPC-to-Board (2 Piece)

Ideal for Quick Charge

Power Connector

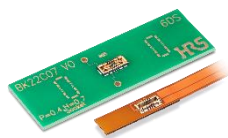


BM25

Pitch : 0.4mm
Height : 0.7mm
Depth : 2.6mm
Rated Current : 10A for power
0.3A for signal

Power/Signal

Hybrid FPC-to-Board Connector

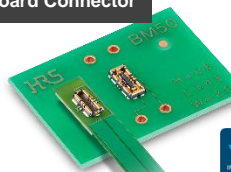


BK22

Pitch : 0.4mm
Height : 0.7mm
Rated Current : 15A for power
0.3A for signal

Power/Signal

Hybrid FPC-to-Board Connector

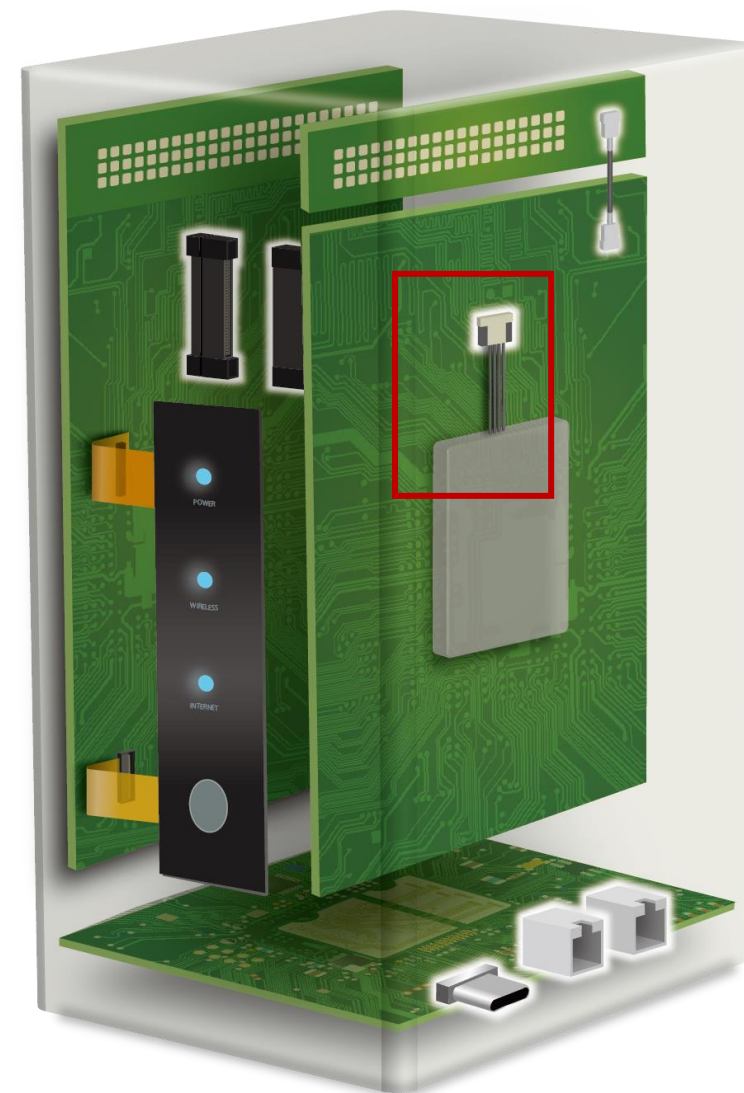


BM50

Pitch : 0.35mm
Height : 0.6mm
Rated Current : 15A for power
0.3A for signal



*The CES Innovation Awards are based upon descriptive materials submitted to the judges. CTA did not verify the accuracy of any submission or of any claims made and did not test the item to which the award was given.



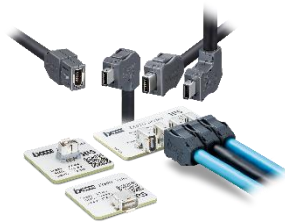
6. Ethernet Connection

Ethernet Connection



TM11R

RJ45
EMI Modular Jack



ix Industrial™

Cat.6A Ethernet
Next Generation
Ethernet Connector



Compact

Robust

7. Interface Connection

I/O Connector



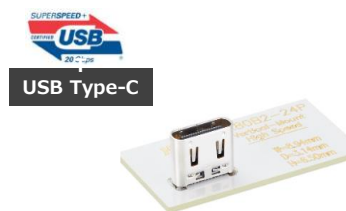
CX90B2-24P

Top-Mount
Right Angle SMT Double-row



CX90B-16P

Top-Mount
USB2.0, 5A



CX80B2-24P

Top Mount
Vertical SMT

